



**WOKINGHAM
BOROUGH COUNCIL**



A Meeting of the **SACRE (STANDING ADVISORY COUNCIL ON RELIGIOUS EDUCATION)** will be held in TEAMS on **MONDAY 7 MARCH 2022 AT 6.15 PM**

Note: THE MEETING can also be watched live using the following link:
https://youtu.be/7uMgKmUR_tg

Susan Parsonage
Chief Executive
Published on 17 February 2022

MEMBERSHIP OF THE SACRE (STANDING ADVISORY COUNCIL ON RELIGIOUS EDUCATION)

Group A

Catherine Jinkerson	Free Church
Beth Rowland	Free Church
Anju Sharma	Hinduism
Shira Solomons	Judaism
Sukhdev Bansal	Sikhism
Shahid Younis	Islam

Group B

Linda Galpin	Church of England
Rev Philip Hobday	Church of England

Group C

Stephen Vegh	Chairperson Secondary RS Teacher
Julie Easton	Primary RE Teacher
Paris Finnegan	Primary RE Teacher
Philippa Chan	Primary Headteacher
Samantha Lawless	Primary RE Teacher
Nick Barnett	Soulscape

Group D

David Hare	Wokingham Borough Councillor
Jackie Rance	Wokingham Borough Council

Clerk to the SACRE

Catharine Newport

LA Link / RE Advisor

Angela Hill and Emily Waddilove

ITEM NO.	SUBJECT	PAGE NO.
1	WELCOME AND APOLOGIES The Chairman will welcome members, guests and new members. The clerk will extend apologies received. Stephen/Catharine (2mins)	
2	MINUTES To confirm the minutes of the meeting held on 29 th November 2021.	5 - 10
3	MATTERS ARISING	
4	SPRING TERM 2022 - HOW ARE THINGS FOR WOKINGHAM SCHOOLS?	
5	FINAL ANNUAL REPORT ON PREVIOUS ACADEMIC YEAR TO BE SHARED	11 - 12
6	DEVELOPMENT PLAN AND BUDGET	13 - 18

7	FEEDBACK FROM TEACHER NETWORKS AND TRAINING OPPORTUNITIES	19 - 20
8	SACRE PROJECTS	
9	BERKSHIRE SACRE HUB UPDATE - FEEDBACK FROM HUB MEETINGS	
10	NATIONAL UPDATES RELATING TO EDUCATION AND RE	21 - 24
11	NASACRE UPDATES	25 - 26
12	AOB	
13	DATES FOR NEXT MEETINGS Monday 7 th March 2022, Monday 20 th June 2022	

This page is intentionally left blank

SACRE (STANDING ADVISORY COUNCIL ON RELIGIOUS EDUCATION)

MINUTES OF A MEETING HELD ON 29 NOVEMBER 2021 AT TIME NOT SPECIFIED

Committee Members Present

Group A

Catherine Jinkerson	Free Church
Beth Rowland	Free Church
Anju Sharma	Hinduism
Shira Solomons	Judaism

Group B

Rev Philip Hobday	Church of England
-------------------	-------------------

Group C

Stephen Vegh	Chairperson Secondary RS Teacher
Julie Easton	Primary RE Teacher
Philippa Chan	Primary Headteacher

Group D

David Hare	Wokingham Borough Councillor
Jackie Rance	Wokingham Borough Council

Clerk to Sacre

Catharine Newport

LA Link / RE Advisor

Angela Hill and Emily Waddilove

1 WELCOME AND APOLOGIES

The Chairman welcomed members and informed them of the later arrival of Shira Solomons. Apologies were received Shahid Younis.

2 MINUTES

There is one correction to the minutes of 14th June 2021. Item 2 referred to '*... the last meeting held on 9th November 2021*' and should have read '*1st March 2021*'.

The Minutes were proposed by Beth and seconded by Philippa.

3 MATTERS ARISING

Emily raised the issue of membership. Since the last meeting Christine Morgan who was in Group A - *Christian denominations and other religions* and Lisa Cornwell was in Group C *Teachers, teaching unions and educationalists* have resigned leaving us with 6 vacancies on the SACRE: 2 for Group A (*Christian denominations other than the Church of England*), a representative for Buddhism (a long-standing vacancy), 1 vacancy for Group B (*The Church of England*) and 2 vacancies for Group C (*Teachers, teaching unions and educationalists*).

Catharine has emailed Churches Together in Wokingham and they have forwarded the email to their members, and this can be followed up on an individual church basis. Catharine also emailed Soulscape, a faith organisation working in a number of Wokingham schools and Nick Barnett has jumped at the opportunity to join. He is keen to join as a representative of Soulscape rather than a church and will, therefore, join Group C, if members are in agreement. The committee agreed that Catharine should contact Nick with details of how to be nominated to join the SACRE.

Catharine will also explore the possibility of communicating through WBC internal channels.

Beth pointed out that we should not forget that Woodley and Earley are not included in CTW and we need to be careful not to focus only on Wokingham town. Beth has invited several people to join Group A and is waiting to hear from them.

Personal invitation works best so we appeal to all SACRE members to personally invite anyone they think would be ideal to join.

4 AUTUMN TERM 2021 - HOW ARE THINGS FOR WOKINGHAM SCHOOLS?

Emily updated the SACRE on the latest developments in schools as follows.

Government requirements to minimise Covid infection were in place throughout the Summer Term but there are no requirements for the Autumn term although some schools have kept some measures such as staggered start and end times. This means that schools are left to negotiate with parents on issues such as not sending siblings into school where a confirmed case of COVID exists in their home. The LA has been trying to support schools through these negotiations with parents. Half-term helped to cut the infection rates which had been rising in the first half of the term but shortly after half term infections began to increase again. Infection rates are now higher in Primary schools than Secondary schools as many Secondary school students have been vaccinated.

There is now Public Health and Local Authority guidance for the whole of Berkshire West for the rest of this term which includes in secondary schools' students and staff wearing masks in communal areas; regular lateral flow testing for staff and secondary pupils; avoiding year groups mixing; risk assessments for things like Christmas activities and how to do those in a more Covid secure way; guidance on managing 'close contacts' of positive cases etc.

We currently have 27 schools in Wokingham operating under the 'Contingency framework' which schools come under if their number of Covid infections substantially increases and it is apparent that infections are occurring within the school. These schools have regular meetings with Public Health and the local authority to support them through the process of managing the outbreak. A whole class may be asked to take a PCR test and, whilst they are awaiting the results, asked to stay at home and participate in remote learning. There are also quite high levels of staff absence due either to them having tested positive or a close contact testing positive and this is causing greater pressure on the remaining staff as they provide cover for their missing colleagues.

The School Improvement team are only visiting schools where it is essential. This also means that for SACRE members, the advice has not changed and contact with schools should continue to be carried out remotely.

5 ELECTION OF CHAIR AND VICE-CHAIR

[This item was discussed as item 2 during the meeting]

Catharine had emailed members requesting nominations for Chair and Vice-Chair and advised members that she had received no nominations. Stephen and Beth were willing to stand for re-election and all were in favour, so they were re-elected: Stephen as Chair and Beth as Vice-Chair.

6 DEVELOPMENT PLAN AND BUDGET

Angela updated the committee as follows;

The following should be read in conjunction with the Development Plan in the Agenda Pack.

A. Core Business

1. We have already covered membership in item 3 matters arising where we outlined efforts being made to ensure we have as full and comprehensive membership as possible.
2. As a committee we get good attendance at our 3 meetings a year.
3. As mentioned in item 4 above, the current situation does not allow for SACRE members to visit schools.
4. The annual report is almost finished and has been produced in line with a new framework devised by NASACRE in partnership with the Department for Education. This new standard framework is designed to enable easy comparison of reports from the different SACREs, see national trends and offer SACREs appropriate support to enable them to fulfil their statutory duty and do the extras which enhance the experience of RE in schools. The report is due to be submitted on 30th December 2021. We are on track for this deadline, and it will be emailed to SACRE members for comment and approval beforehand.
5. Review of the action plan is currently being done during this meeting.
6. We are paid-up members of NASACRE and we present NASACRE updates at each meeting.

B. Support for teachers of RE

Items 1-4

We have supported Wokingham Teachers comprehensively throughout the pandemic.

Every school received a free resource at the end of the summer term and training is being provided this term in the form of twilight sessions as a mini festival of RE.

We have dates for the primary RE network meeting in the spring term and for primary RE subject leader training.

We are thinking carefully and strategically of ways to support secondary schools during the rest of this year. The secondary federation INSET day is again not taking place this year. We have decided to have a network meeting for secondary school teachers in January. We will discuss with teachers at this meeting what further support they would like.

Pan Berkshire Hub

We are entering into the syllabus review. We will discuss this more later in this meeting.

'Real People Real Faith' project is complete. Recording of the launch has been made available to teachers. More funding has been made available allowing the opportunity to include more faith representatives talking about diversity within religious traditions.

Emily provided dates for the next planned RE sessions as follows:

Secondary Network – 17th January 2022

This meeting is designed to allow secondary teachers to tell us what additional support they require and will be OFSTED focused. We have invited the RE leader from The Forest School, who have recently had an OFSTED, to attend and share her experience of being inspected. Invitations for Secondary RE Teachers have already been emailed out and Stephen suggested making sure Julian Bushell is aware as he can ensure the information is disseminated to the RE leads. He also suggested getting in contact with the Head of RE at Maiden Erlegh as they have recently had an OFSTED inspection with a deep-dive for RS..

Angela stated that we will ask the secondary teachers if they would like to continue having network meetings going forward. They may find it easier to attend meetings online.

Primary RE Subject Leader Training – 21st March 2022 4pm – 5.30pm

Primary RE Network Meeting – 29th March 2022 4pm – 5.00pm

If any SACRE member would like to attend any of these meetings, please email Catharine and she will send you the TEAMS link.

Budget

Emily talked through the budget as follows.

Following on from discussions at the last meeting about the money we carried forward from last year, we have sent every school a free resource and have provided 3 extra twilight training sessions.

We currently have around £600 in this year's budget that has not yet been allocated. Normally we would pay an amount to the Secondary Federation to support the training for RE teachers on their INSET day but they are not planning to do that again this year. Depending on what support the Secondary RE Teachers request at the network meeting in January, some or all of that money could be used to provide additional training for secondary schools, providing the SACRE members agree.

Stephen reminded the committee that if anyone has a project in mind that feeds into our development plan, please let Emily or Angela know as there is this funding available.

7 DRAFT ANNUAL REPORT ON PREVIOUS ACADEMIC YEAR TO BE SHARED

This has been covered in item 6 above. The new framework has been sent to everyone. If anyone has any questions about it, please email Emily.

8 FEEDBACK FROM TEACHER NETWORKS AND TRAINING OPPORTUNITIES

Please see details in the agenda pack which provide an overview of what has been happening since the last meeting.

16 participants attended the Primary Network meeting in July 2021. This included an item on the 'Real People, Real Faith' project, aimed at people who had missed the launch earlier in the year. A video of the launch was made available to teachers. Teachers were shown how to access the 'Real People and Real Faith' resources with tips on how to use them.

There is one more session in the RE Festival to go. We have had really good numbers, with between 15 and 36 participants attending the sessions. The OFSTED session was the best

attended. We have received very positive feedback from these sessions. Beth attended training provided by Angela's colleague, Lat Blaylock, at RE today on Islam and thought it was 'Top notch'. Stephen attended training on OFSTED run by Angela and thought it was really useful and easy to digest.

We advertised to all schools a training opportunity offered by NATRE held in Milton Keynes. 1 Teacher from Wokingham attended.

9 SACRE PROJECTS

Most items have already been mentioned in 6 above, however, Emily shared with the committee the 'Conceptual Understanding at the end of Key Stage 2 – pupil readiness for Key Stage 3' document. This document includes a page for every foundation subject, with the National Curriculum requirements followed by information about the concepts and skills that Wokingham teachers have agreed that children in Wokingham should understand by the end of Key Stage 2. This is designed to help both Primary and Secondary schools plan their curriculum to ensure a smooth transition. Previously this document did not include RE but, following the collaborative sessions with RE teachers earlier in the year, this page has now been included. Rather than the National Curriculum, for RE we have looked at the non-statutory National Curriculum framework and the locally agreed syllabus. This document is available on the Schools Hub and Catharine will email it to SACRE members to enable them to look at it in more detail.

10 BERKSHIRE SACRE HUB UPDATE - FEEDBACK FROM HUB MEETINGS

Syllabus Review – Emily emailed everyone recently to ask if the committee are happy to continue collaborating with Pan-Berkshire in respect of the syllabus. There is no legal requirement for us to do so and we could have our own Wokingham syllabus. No one has replied to express any reservations with us being part of Pan-Berkshire Hub to review and share a syllabus after 2023.

We are currently surveying teachers for their views of the current syllabus and where they would like to see it develop in the future. There was a short window for teachers to respond as the survey closed on 18th November 2021. There were around 40 respondents of which around 7 were Wokingham and 18 were Bracknell. The feedback seems to indicate a desire for a light touch approach to looking at the syllabus and bringing it up to date with current thinking and developments in RE. Angela asked for views on whether the survey should be re-opened to allow for more feedback. The committee's view was that the survey should be re-opened even if only a couple more teachers have the time to submit their views. Angela will inform the Hub.

There was discussion between teachers on the SACRE about the syllabus review. There is some agreement that a radical change to the syllabus could be positive, for example taking a multi-faith approach to units of work, but this is balanced with considerations of teacher workload and wellbeing. Angela reminded members that the new syllabus will not be implemented until 2023.

11 NATIONAL UPDATES RELATING TO EDUCATION AND RE

Angela has provided the updates in the agenda pack.

12 NASACRE UPDATES

Angela has provided the updates in the agenda pack. All information relevant to RE teachers has been included in Education News and forwarded to them via email.

The NASACRE conference is being run on 23rd May 2022, hopefully live. There is funding available if anyone would like to attend. Please email expressions of interest to Catharine.

13 AOB

There were no other matters raised.

14 DATES OF NEXT MEETINGS

7th March 2022*, 20th June 2022, 7th November 2022

* Due to the current unpredictable climate, we are planning to hold this meeting in TEAMS. Whether the other meetings in 2022 will be held in TEAMS or live will be reviewed nearer the time.

The meeting ended at 7.32pm

SACRE budget April 2021 - March 2022

BUDGET PLAN	Spending Apr-June 21	Spending July-Oct 21	Spending Nov 21- March 22
<p>CORE COSTS Planned spending = £2,990</p> <ul style="list-style-type: none"> • Professional fees <ul style="list-style-type: none"> - NASACRE subscription - Attendance at NASACRE conference • IT support for webcasting virtual SACRE meetings • Annual report design/ printing • LA link/RE advisor – 5 days: <ul style="list-style-type: none"> - 3 x SACRE meetings (preparation and attendance) - Annual report writing - Attendance at NASACRE conference - Travel expenses (RE advisor) 	<p>£60 – 4 places for NASACRE conference</p> <p>£250 - Advisor – June SACRE meeting</p> <p>£500 – Advisor – NASACRE conference</p>	<p>£105 – NASACRE subscription</p> <p>£50 – NASACRE training events – for members and advisor to attend</p>	<p>£125 – Advisor – completing mandatory WBC training module</p> <p>£250 – Advisor – November SACRE meeting and preparation</p> <p>£500 – Advisor - Annual report writing and attending NASACRE training on new report format</p>
<p>PROJECT COSTS Planned spending = £1,675</p> <ul style="list-style-type: none"> • Consultancy: <ul style="list-style-type: none"> - 3 x primary network meetings - Half day primary subject leader training - Twilight secondary training - Travel costs • Updating of SACRE leaflet – design and printing 		<p>£250 – Advisor – July network meeting</p>	<p>£250 – RE Today – November network meeting</p> <p>£125 – Advisor – guidance to LA/ schools via email</p>
<p>PROJECT COSTS – Use of funds carried forward from 2020-21 = £2,832</p> <ul style="list-style-type: none"> • 3 x twilight training sessions • Resource for every school + postage 		<p>£2,037 – Resources for schools/ postage</p> <p>£795 - 3 twilight training courses</p>	
<p>BERKSHIRE SACRE HUB ACTIVITIES Planned spending = £1,475</p> <ul style="list-style-type: none"> - Termly Hub meetings (Hub managers’ prep and attendance) - Hub manager travel costs - Hub activities: <ul style="list-style-type: none"> Completion of Westhill ‘Real People: Real Faith’ Project Syllabus review - RE advisor attendance at hub meetings - 1.3 days -RE Advisor time to support hub activities – 0.5 day -RE advisor travel costs 	<p>£500 - contribution to hub</p> <p>£62 – Advisor – hub meeting April</p>	<p>£63 – Advisor – hub meeting July</p>	<p>£250 – Advisor - Hub meetings/syllabus review planning during Autumn term</p>
<p>Total planned spending = £8,972</p> <p>Budget allocation = £9,600</p>	<p>Total spends to end of June: £1,372</p>	<p>Total spends to end of Oct: £4,672</p>	<p>Total spends to end of Feb: £6,172</p>

This page is intentionally left blank

Wokingham SACRE action plan April 2021-March 2022

(See budget sheet for costings)

Aim	Actions	Timescales	People Responsible	Summer 2021	Autumn 2021	Spring 2022
<p>A. CORE BUSINESS</p> <p>To be a supportive and proactive SACRE enjoying full and well-informed membership</p>	<p>1. Fill membership vacancies if/when they arise</p> <p>Work proactively with SACRE members, faith communities and other partners to ensure representation on all SACRE committees.</p>	<p>ongoing</p>	<p>SACRE Chair SACRE Clerk SACRE members</p>			
	<p>2. SACRE members attend termly SACRE meetings (3 per year) and, when possible, teacher termly network meetings and training events e.g. annual SACRE conference</p>	<p>Termly SACRE meetings: Summer 2021 Autumn 2021 Spring 2022</p> <p>Termly teacher network meetings and occasional training events</p>	<p>SACRE Chair/SACRE Adviser SACRE members SACRE Clerk</p>	<p>Meeting</p>	<p>Meeting</p>	<p>Meeting</p>
	<p>3. Encourage SACRE members who are not involved directly in schools to contact or visit a school or schools and, where possible, to observe RE in</p>	<p>Aim for one person to visit a school by the end of the 2019-20 academic year, and one each term thereafter</p>	<p>SACRE Chair SACRE Clerk SACRE members RE teachers and school leaders</p>	<p>1 visit or contact</p>	<p>2 visits or contacts in total</p>	<p>3 visits or contacts in total</p>

	action and feed back to SACRE					
	4. Produce annual SACRE Report	Summer Term 2021 (delayed this year due to new NASACRE DfE framework, but will be submitted on schedule by 30 th December 2021)	SACRE Adviser and clerk	Awaiting NASACRE training and guidance for new, standardised annual report template	Present draft for members' approval during Autumn term Submit report by 30 th December 2021	Present final, submitted report at Spring meeting and to Councillors on Date tbc
	5. Review the action plan at each meeting and update for next year	At each SACRE meeting	SACRE Adviser and SACRE	Meeting	Meeting	Meeting
	6. Subscribe to NASACRE Representation at annual NASACRE conference, NASACRE AGM	Ongoing	1 SACRE member and SACRE Adviser to attend annual AGM. SACRE adviser to provide updates on NASACRE business at meetings and, where appropriate, through the SACRE clerk via email	This year's conference and AGM will take place online on 24 th May 2021 Pan Berks Hub present the Real People: Real Faith NASACRE Westhill project at this meeting.	NASACRE updates discussed at Autumn meeting. Invitation opened to members to attend the AGM in May 2022	Spring 2022 SACRE meeting to finalise who will attend NASACRE AGM in May 2022 to represent Wokingham SACRE
B. To support teachers of RE to continually improve RE	1. Provide a termly primary RE network meeting for Wokingham	Ongoing, a primary network meeting each term plus feedback at each	SACRE Adviser	Network meeting on a Tuesday near the	Network meeting at a convenient time for teachers each term	Network meeting at a convenient time for teachers each term

learning in their school, ensuring that the agreed Pan-Berkshire syllabus is understood, and teachers are equipped to deliver it effectively	<p>teachers, and on occasions where it is appropriate, involve secondary teachers also 4-5.30 online or hosted by volunteer school.</p> <p>Feedback to SACRE</p> <p>SACRE members are welcome to attend these meetings</p>	termly SACRE meeting		<p>beginning of each term</p> <p>Online</p>	Online	Online or face-to-face TBC
	<p>2. Primary Subject Leader Training x 1 half-day or twilight session (may be joint with Reading or Bracknell)</p>	<p>Autumn term 2021 October date tba 1-3.30pm or shorter twilight session Venue: tba</p>	SACRE Adviser	To be advertised in the Autumn term and booking to be made available	Advertised and booking opened	Primary subject leaders' course arranged for 21 st March 2022.
	<p>3. Provide annual CPD session for secondary RE teachers/heads of RE Provide at least one twilight secondary CPD. Based on teacher feedback on 2019-20 survey, this will be based around</p>	<p>Autumn term secondary training – offer to schools across Berkshire for payment</p>	SACRE Adviser	GCSE RS training provided. Possibilities for the next academic year discussed at SACRE meeting – no federation annual secondary training this or	Possibility of using £600 surplus budget to provide an annual training discussed at SACRE meeting. Teacher views to be sought.	Training needs discussed at secondary network meeting. Subject knowledge identified as a training need. Teachers emailed regarding focus for subject

	enhancing GCSE RS performance.			next academic year		knowledge training
	4.Support RE teachers and leaders in secondary schools	Ongoing	SACRE advisor, Chair and clerk	Secondary colleagues attended the primary network on the Real People: Real Faith project. This was advertised to them also.	Delivered training appropriate to secondary teachers/leaders: Ofsted and RE (cross-phase) Picturing Islam, Picturing Muslims Secondary online network advertised	Secondary online network held in January 2022 Plan to re-establish a secondary network, utilising online platform, once a term with meetings after school finishing no later than 5pm
Pan-Berkshire Hub	Consolidate and develop the Pan-Berkshire SACRE Hub. Syllabus review	Ongoing	SACRE members SACRE advisers and the 6 Chairs from all Berkshire SACREs	The Real People: Real Faith Project is nearing completion. Online conference to showcase this work took place in April 2021 plus a presentation to NASACRE in May 2021 The Hub continue to seek contributions	Work with Hub to aid any final steps towards completion of NASACRE Westhill Project Liaise with SACRE members and Hub to consider the feasibility of further projects, but prioritising the syllabus review	Report to SACRE members/Hub on regarding plans for further project work with the Hub Feedback to SACRE on results of syllabus questionnaire, and consider possible ways to progress with the syllabus review.

				<p>from faith communities to demonstrate diversity within as well as across religions</p> <p>Syllabus review: early discussions at Hub around commencing the syllabus review</p>	<p>Teacher survey collating views on current syllabus and next steps will be issued to teachers</p>	<p>Analysis of survey and discussions on next steps at hub.</p>
--	--	--	--	--	---	---

This page is intentionally left blank

ITEM 7

Wokingham SACRE Spring Meeting

Teacher Networks and Training Opportunities

Since the last SACRE meeting on 29th November 2021, the following training opportunities and networks for teachers and leaders of RE in the local authority have taken place. All events that have already taken place have received overwhelmingly positive feedback from teachers. All took place online, via Microsoft Teams, as twilight sessions. All sessions were provided free of charge to schools.

Autumn Term 2021

Training/networking opportunity	Date	Description	Number of participants
<p>Primary Network Meeting: Creative RE for the foundation stage</p> <p>led by Fiona Moss, RE Today</p> <p>Primary (EYFS)</p>	30 th November 4pm-5pm	Story, subject knowledge and creative strategies, and examples of pupil work. Come along to hear ideas and see samples of work. Bring questions and ideas of your own.	21 teachers + 1 SACRE member

Spring Term 2022

Training/networking opportunity	Date	Description	Number of participants
<p>Secondary Teachers' Network</p> <p>led by Angela Hill, RE Today with contributions from Sarah Whiteread, Head of RE at the Forest School</p>	17 th January 4pm-5pm	Discussion focused on how SACRE can support future training and development needs of secondary RE. Outline and discussion of the national picture for RE and Ofsted developments, with input from a secondary Head of RE who's experienced a recent Ofsted inspection.	4 Teachers – Forest, Bohunt, Emmbrook, St Crispin's

Spring Term 2022: Forthcoming training and network opportunities

Training/networking opportunity	Date	Description
<p>Primary RE Subject Leader Training</p>	21 st March 4pm-5.30pm	CPD for new RE subject leaders, those returning to the role or those wanting a refresher. Exploring the role of the subject leader, using practical activities to develop understanding of RE and your leadership and management skills. Tips on establishing and developing a vision for RE, planning a scheme of work, and effective and manageable monitoring and self-evaluation.

Primary RE Network Meeting	29 th March	National and local updates relating to primary RE.
-----------------------------------	------------------------	--

Summer Term 2022: Forthcoming training and network opportunities

Training/networking opportunity	Date	Description
Primary RE Network Meeting	TBA	National and local updates relating to primary RE. Training focus TBA
Secondary Network/Subject Knowledge CPD	TBA	Surplus funding (£600) may be used to support secondary training/network meeting(s). National and local updates relating to primary RE. Subject knowledge training for Key Stage 3 has been requested and teachers are being surveyed about which areas are a priority for them.

ITEM 10

NATIONAL UPDATES RELATING TO EDUCATION AND RE

Inspecting RE: An examination of OFSTED inspections

The publication of the [Religious Education Research Review](#) was greeted positively by many teachers.

NATRE has examined the inspections reports published between 1st May - 14th Oct 2021. NATRE investigates whether inspectors are taking account of the factors identified in the research and if this is improving the potential of inspections to drive up standards in RE. A detailed article outlining sample reports and themes is available for NATRE members.

Key themes that are commented on are

1. Studying the curriculum in depth, knowing more and remembering more
2. A well sequenced curriculum to ensure that pupils learn the knowledge they need for later topics.
3. Planning an ambitious curriculum
4. 'Collectively enough' – is subject content 'collectively enough' for pupils to gain a good understanding?
5. Adequate curriculum time is given to RE, so that leaders can deliver an ambitious curriculum.
6. Developing pupils' personal knowledge helps them to relate the content to themselves (for example, their own prior assumptions).
7. There is sufficient training and professional development so that teachers have appropriate subject professional knowledge.
8. The importance of visits and visitors
9. Links to SMSC and Personal Development
10. Generally poor or non-existent provision
11. The importance of subject leadership

NATRE members can download the full document [on this link](#).

Could SACRE encourage schools to become members of NATRE to gain up to date information such as this? Is SACRE monitoring OFSTED reports? How far does SACRE training help support teachers to meet these descriptions of good quality RE?

Analysis of teacher survey on Secondary RE and RS

A ninth secondary NATRE Survey – July 2021 was conducted during the spring term of 2021 via a number of teacher networks supported by the National Association of Teachers of Religious Education (NATRE), and RE Today Services. Conclusions can be drawn around provision, GCSE entries, timetabling and the supply of specialist RE teachers.

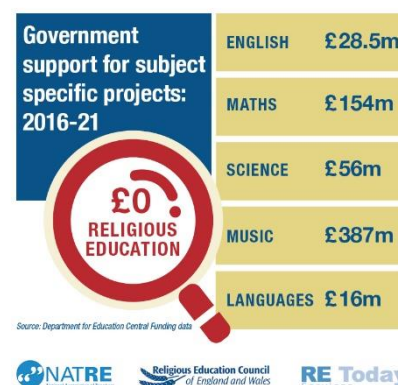
See the report www.natre.org.uk/news/latest-news/an-analysis-of-a-survey-of-teachers-on-the-impact-of-government-policy-on-student-opportunity-to-study-gcse-rs/

Is this something that should be discussed on our SACRE agenda? Are we aware of the picture in our schools? Are senior leaders aware of their duties around RE?

Religious Education and the lack of support by government funding

A written parliamentary question tabled has led to the government sharing that it has been supporting curricular projects in many areas of the curriculum, but has allocated no funds on religious education specific projects in the last 5 years.

The RE community are asking people to write to their MP to ask if this can be changed. According to a Savanta survey commissioned by Culham St Gabriel's Trust, 64% of UK adults agree that RE is an important part of the school curriculum today. Religious Education requires support by the government.



Can SACRE talk to local MPs about this and ask them to press the government on this?

Religion and Worldviews in Religious Education

This new page on the REC website hosts a series of resources relating to worldviews. It includes a new animation from Jason Ramasami, well known animator and former RE teacher, that captures the key characteristics of how this new approach represents religions in the classroom, a Bibliography from Dawn Cox of articles, blogs and other material that have been published in response to the CoRE Report and a series of FAQs.

www.religiouseducationcouncil.org.uk/worldviews/

Do we need an item on our next agenda to discuss new developments in worldviews?

The Culham St Gabriel's Leadership Programme

The programme is a one-to-two-year mentoring and coaching programme developing leadership skills in middle leaders. It is **free** to schools. Applications are open now for a September 2022 start. The programme works at 2 levels.

Stage 1

This stage is for those local or regional leaders who are beginning to work across more than one school. For example, leading Religion and Worldviews across a MAT or supporting other schools in a Federation and/or leading a local group or hub. Some NATRE Regional Ambassadors, SLEs, REQM Gold award RE leads or LTLRE Hub leads might find this Stage of CPD helpful.

Stage 2

This Stage is for teachers who have completed Stage 1 and/or for those who already have a regional/national role and would like to develop their expertise further. This stage is particularly for teachers/advisers who are likely to continue their specialism into senior leadership roles within or outside of their school situation. Those who are seeking to become advisers, ambassadors or an Executive member of one of the RE Organisations are particularly encouraged to apply.

APPLICATIONS NOW OPEN: Closing date for applications: 31st March 2022

For more details and a film outlining the programme go to www.reonline.org.uk/leadership/leadership-programme/

Spring Term 2022 National SACRE updates from RE Today

Who should we be encouraging to join this programme? Can we share this with schools?

NATRE Spirited Arts 2022

Will schools from our area join hundreds of schools from around the world taking part in this year's Spirited Arts competition? Entries are welcomed in (almost!) any art form pupils can think of. Winning entries will provide a good response to one of the 5 themes, and judges will be asking is it original? Is it well-crafted? And (most importantly!) is it excellent RE?

The 5 themes

1. "We have more in common than that which divides us."
2. God's good earth? ("Beautiful World, wonderful God?")
3. Searching for God
4. A view of the world.
5. Celebrations: Big days and big ideas

Find out more details here www.natre.org.uk/about-natre/projects/spirited-arts/spirited-arts-2022/

Lessons that make a difference

CSTG through RE:ONLINE have launched their blog writing competition. CSTG are inviting children and young people to write a 500-word blog or record a 2-minute audio or visual file about a Religion and about a Religion and Worldviews (or RE) lesson that has made a difference to them. Entries are due in by 14th March.

Winning entries will be notified and their blogs/vlogs posted on RE:ONLINE in Summer 2022.

www.reonline.org.uk/news/pupil-blog-competition-2022/

How can SACRE encourage schools take part in these two competitions? Can this link in with anything going on locally? Some SACREs have held local Spirited arts competitions and worked to display entries in a local museum. Is this something this SACRE might consider?

New offer from 'Good News for Everyone': free Bible magazine to pupils and primary classrooms

The charity 'Good News for Everyone' – which used to be known as 'The Gideons' – have produced a 48-page magazine which provides children aged 7-11 with extracts from Bible stories, texts and teachings. The extracts include all the major Bible texts used in the 'Understanding Christianity' resources. There are questions for discussion and thinking, and quizzes, all illustrated in an age-appropriate style.

Good News for Everyone exists to give Christian scriptures away, and this new educational collection of Bible texts is available through schools to pupils – for example Good News for Everyone will be happy to send a visitor to schools to give a class set of copies for teachers to use and a personal copy to all school pupils for them to keep. The charity still visits secondary schools to distribute copies of the New Testament, Psalms and Proverbs free to pupils.

Contact: <https://goodnewsuk.com/bibles-for/education>

Websites refreshed and relaunched

Spring Term 2022 National SACRE updates from RE Today

RE:Quest

The **RE:Quest** website has refreshed and relaunched with a series of new resources on key Christian concepts such as Salvation, resources for pupils with additional needs and a series of new films. You can also create boards of resources for particular units or topics for pupils and teachers to access. Resources on the key concepts provide sample lesson plans too.

<https://request.org.uk>

Understanding Humanism

The **Understanding Humanism** website has relaunched with over 100 new FREE resources to support teaching about humanism and non-religious worldviews.

Resources for ages 5-18 organised into several core areas of knowledge to support young people's understanding of a humanist approach to life, humanist history, and the influence of humanism on the modern world. '

<https://understandinghumanism.org.uk>

True Tube

The **Truetube** website has also had a refresh with a series of new films added for teachers in Primary and secondary schools.

www.truetube.co.uk

Online training

Webinar series from University of Edinburgh

<https://blogs.ed.ac.uk/teachingbuddhism/2021/11/29/who-is-the-buddha-new-webinar-series-for-teachers-jan-march-2022/>

A series of webinars on the life of the Buddha – excellent for KS3 and KS4. The series has already started, but sessions are uploaded afterwards, so you can catch up later.

Register [here on Eventbrite](#)

Online seminar series from University of Chester

The Chester Uni A level webinar series will be starting again soon. Look out [here](#) to find out about the programme. Details coming soon.

*National News Update prepared by RE Today/NATRE
February 2022*

ITEM 11 NASACRE UPDATES

NASACRE Conference 2022 - Ambitious SACREs

Taking place in Birmingham on Monday 23 May, this conference will provide an opportunity for SACRE members to engage in discussion around issues of RE and Collective Worship. Keynote speakers will be Sarah Lane-Cawte (new Chair of the REC - Religious Education Council), HMI Richard Kueh (Ofsted) and David Hampshire, a previous chair of NASACRE, who will present the analysis of the most recent (2021) SACRE annual reports.

Additional sessions will look at the new SACRE audit tool, Westhill award winners, the Local area Network report and other topical issues of interest to SACREs.

Who can attend this on behalf of our SACRE?

LAN (Local Area Network) report

'Still Standing' – the REC Local Area Network Report is now live [here](#).

The report asks SACREs to consider the following points:

1. Reviewing SACRE membership in partnership with the LA to ensure that it is representative of the local community, and supports the religions and worldviews included in the Agreed Syllabus. Having a diverse range of voices with specific roles on SACRE is essential if an LA is to be able to discharge its legal responsibilities. SACREs can start the process of working with their LA to update membership now. This may require a change to the constitution or terms of reference; the LA legally approves your members and there is nothing in the present legislation that would hinder this.
2. Continue to build local partnerships with the LA to ensure necessary funding.
3. Within the present legislation regarding their ability to widen their membership, the CoRE report helpfully suggests SACREs think about adding to their membership - if they haven't done so already - education departments at museums and universities, local ITT providers, local RE CPD providers, training school hubs, parents, governors, pupil voice, academies and free schools, to name but a few possibilities. Widening representation and local buy-in strengthens the work of high quality RE in schools.

Claire Clinton, the report's author, believes that there are some useful documents developed by SACREs who participated in the project, for other SACREs to use in their work, including

- An audit tool for Agreed Syllabus reviews
- A simple participatory action research template
- A membership tool

NASACRE hopes that there will be an opportunity for SACREs to find out more about these tools and discuss the impact of the report at the (hopefully!) face-to-face May 2022 conference in Birmingham.

Spring Term 2022 NASACRE Updates

What can our SACRE learn about this? Could someone go back and find out more about this and lead a discussion at our next meeting?

NASACRE's SACRE self-evaluation tool

The NASACRE development group has worked hard on reviewing, updating, and improving the SACRE self-evaluation tool. This tool will enable SACREs to consider their effectiveness in all areas of its work in order to produce a targeted and costed Development Plan in partnership with your LA.

The SEF is available [here](#) for use at SACRE meetings.

There will be a workshop at the conference in May 2022 around how to use the tool to best effect.

Should this be on our summer agenda, led by whoever attends the NASACRE conference?

NASACRE's new online training programme

NASACRE members can access these recorded sessions [here](#) along with the slide shows and resources.

The programme for 2021-22 can be accessed [here](#).

Can anyone from SACRE attend any of these? Which might be useful?